

Hello! Mr. Ork.



"My Favorite Tree" Forum



Written by Shigeki Makino
Illustrated by Kayoko Makino

Where do you live, Shiko?



I live in Shiga Prefecture with deeply forested mountains and the largest lake in Japan.

I walk along path through rice paddies to my elementary school every day.

Do you have
any favorite tree?



Yes, I have a favorite tree.

It has many big leaves and acorns,
and its trunk is thick.

My father made a swing on the tree on
my 7th birthday.

When I ride the swing, I feel like
swinging and swaying with the tree.
Mr. Oak is the name of the tree.

What do you like about
Mr. Oak?



Mr. Oak in spring.

Mr. Oak in summer.

Mr. Oak in autumn.

Mr. Oak in winter.

Thinking about what the tree feels,
I gradually came to like him.

Did you look at Mr. Oak
in spring, summer, autumn,
and winter?



Yes. I looked at the tree all through
the year, spring through winter.

Leaves grew and fell on the ground.



Acorns grew and acorns fell.

The tree changed through four seasons.

I now know the tree is alive.

Where do you look at
the tree?



If you look at the tree from afar,
you can see its shape and size.

When wind blows, branches sway
and leaves twinkle.



If you look at the tree from near,
you can see bumps and dents on its
surface and shapes of leaves.

Ants go straight up, and beetles
come together to suck sap.

Do you look at the tree
from far and near?



Yes. I can see different things.

When I look at the tree from afar,
I see one thing, and another from near.

And touching is surprising.

When I touched the tree on a winter
day, I felt it warm!

Do you see
what the tree feels?



Yes, but you cannot hear
what the tree feels with ears.

When I am thinking about what the
tree feels, I come to understand
what he feels little by little.

I can follow what the tree feels.

Mr. Oak in spring



Yellowish green leaves grow from beads
on twigs.

So many soft yellowish leaves come out.
So many birds perch on the tree.



Mr. Oak in summer



The tree has many green leaves.

Leaves become a little bit harder.

At night beetles come to the tree
and fireflies settle on the tree.

Some leaves are eaten by worms.

Mr. Oak in autumn



Strong winds blow in autumn,
and branches rock and roll.

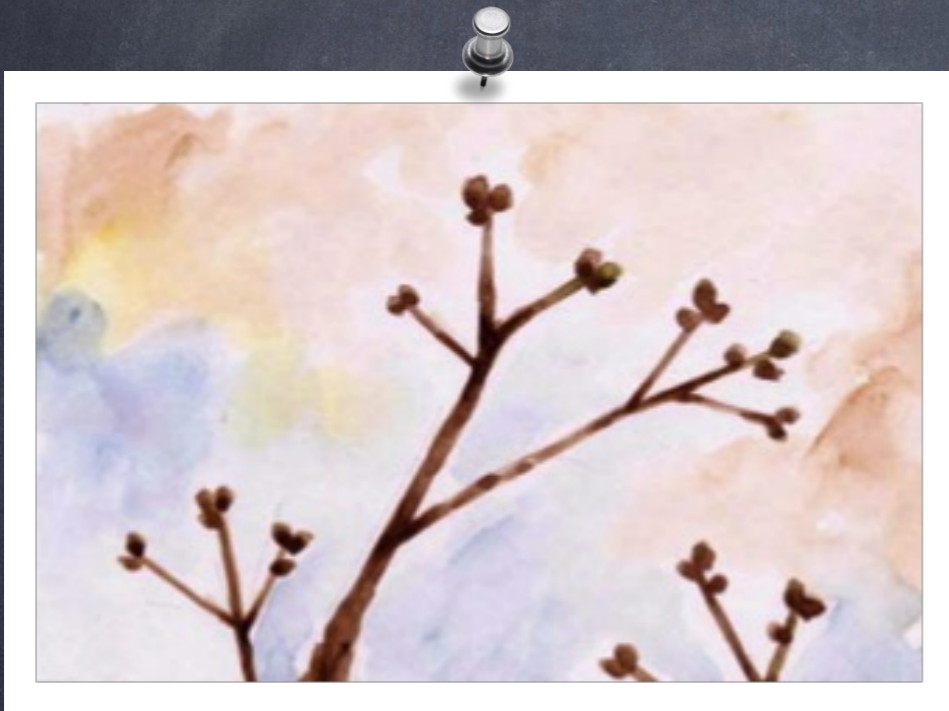
It is surprising that the tree is that supple.

Winter draws near, leaves turn to brown.

Mr. Oak in winter



Leaves fall one by one
and the tree looks cold.



If you take a good look
at it, however, you will see
a lot of beads on twigs.

Leaves grow out from the
beads in spring.

What do you think after
looking at the tree from
spring through winter?

I know Mr. Oak is living with all his might.

He lives with many creatures.

I like to live with Mr. Oak.

I want you to live a long time, Mr. Oak!



"Thank you.
I really appreciate your
feeling that way.
Let's keep living together."



"Oh!"

Do you have your "my favorite tree"?

We live with many people.

We live with many animals.

We live with many plants.

We are all living things.

We are living in harmony on the Earth.

Why don't you live together with a tree of your choice like Shiko?

When you feel you are living among many lives, your heart will warm.

When your heart warms, please think about trees, earth, mountains, sky, rivers, worms, birds, and people through your favorite tree. Please talk about them to other people in your words.

Friends will listen to your talk and feel their hearts warm.

Now, let's look for your favorite tree in your neighbourhood.



"see you!"

