

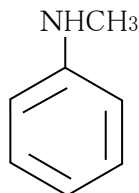
☆☆ MITSUBOSHI CHEMICAL CO., LTD.
office :23 MAEDA-CHO KAMIGAMO KITA-KU KYOTO
603-8005 JAPAN
TEL : +81-75-701-2228 FAX : +81-75-701-2205

N-Methylaniline

Synonym: Methylphenylamine

Empirical formula: C₇H₉N

Structural formula:



mol.wt.: 107.16

Description: Light yellow to brown oil.

Technical data:	Purity	98.5 % min.
	Aniline	0.03 % max.
	N,N-Dimethylaniline	0.8 % max.
	Specific gravity (15/4°C)	0.991~0.994
	Boiling point	195.7°C
	Flash point	97.3°C
	Sparingly soluble in	water
	Soluble in	many organic solvents

Standard packing: Steel drums, contents 195kgs.

Toxicity: LD₅₀ 280mg/kg rat (oral)

Application:

Dyes (intermediates), Rubber additives, Pharmaceuticals, Explosives,
Agricultural chemicals (insecticides/fungicides).