

★★ MITSUBOSHI CHEMICAL CO.,LTD.

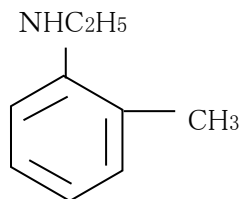
office :23 MAEDA-CHO KAMIGAMO KITA-KU KYOTO
603-8005 JAPAN

TEL : +81-75-701-2228 FAX : +81-75-701-2205

N-Ethyl-o-toluidine

Empirical formula: C₉H₁₃N

Structural formula:



mol.wt.: 149.24

Description: Light yellow to brown oil.

Technical data:	Purity	98.5 % min.
	o-Toluidine	0.3 % max.
	N,N-Diethyl-o-toluidine	0.8 % max.
	Specific gravity (15/4°C)	0.951~0.955
	Flash point	92.0°C
	Sparingly soluble in	water
	Soluble in	many organic solvents

Standard packing: Steel drums, contents 190kgs.

Application: Dyes (intermediates)