

☆☆ MITSUBOSHI CHEMICAL CO.,LTD.

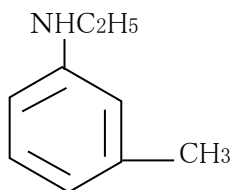
office :23 MAEDA-CHO KAMIGAMO KITA-KU KYOTO  
603-8005 JAPAN

TEL : +81-75-701-2228 FAX : +81-75-701-2205

## N-Ethyl-m-toluidine

Empirical formula: C<sub>9</sub>H<sub>13</sub>N

Structural formula:



mol.wt.: 135.21

Description: Light yellow to brown oil.

Technical data:	Purity	98.5 % min.
	Aniline	0.3 % max.
	N,N-Diethyl-m-toluidine	0.8 % max.
	Specific gravity (15/4°C)	0.949~0.953
	Boiling point	222~3°C
	Flash point	93.0°C
	Sparingly soluble in	water
	Soluble in	many organic solvents

Standard packing: Steel drums, contents 190kgs.

Application:

Photographic chemicals (intermediates), Dyes (intermediates).