

★★★ MITSUBOSHI CHEMICAL CO.,LTD.

office :23 MAEDA-CHO KAMIGAMO KITA-KU KYOTO
603-8005 JAPAN

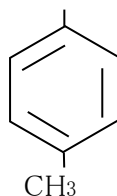
TEL : +81-75-701-2228 FAX : +81-75-701-2205

N,N-Dimethyl-p-toluidine

Empirical formula: C₉H₁₃N

Structural formula:

N(CH₃)₂



mol.wt.: 135.21

Description: Light yellow to brown oil.

Technical data:	Purity	99.0 % min.
	p-Toluidine	0.2 % max.
	N-Methyl-p-toluidine	0.7 % max.
Specific gravity (15/4°C)	0.940~0.944	
Boiling point	210~11°C	
Flash point	85.5°C	
Sparingly soluble in	water	
Soluble in	many organic solvents	

Standard packing: Steel drums, contents 190kgs.

Application: Plastics