



★ ★ ★ MITSUBOSHI CHEMICAL CO., LTD.

Office : 23 MAEDA-CHO KAMIGAMO KITA-KU KYOTO

603-8005 JAPAN

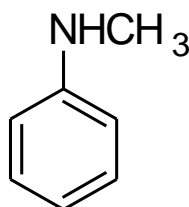
TEL : +81-75-701-2228 FAX : +81-75-701-2205

N-Methylaniline

Synonym : Methylphenylamine

Empirical formula : C₇H₉N

Structural formula :



mol. wt.: 107.16

Description : Light yellow to brown oil.

Technical data :	<u>Purity</u>	<u>98.5% min.</u>
	<u>Aniline</u>	<u>0.3% max.</u>
	<u>N,N-Dimethylaniline</u>	<u>0.8% max.</u>
	<u>Specific gravity(15/4°C)</u>	<u>0.991~0.994</u>
	<u>Boiling point</u>	<u>195.7°C</u>
	<u>Flash point</u>	<u>83°C</u>
	<u>Sparingly soluble in</u>	<u>water</u>
	<u>Soluble in</u>	<u>many kinds of organic solvent</u>

Standard packing : Steel drum, contents 195 kgs.

Toxicity : LD₅₀ 782 mg / kg rat (male, oral)

Application : Dyes (intermediates), Rubber additives, Pharmaceuticals, Explosives,
Agricultural chemicals (insecticides, fungicides)